

Mondoluce
Partner in light



Illuminating 25 years.

Mondoluce is proud to celebrate this milestone in 2020. We are grateful for all the projects, partnerships and people we have had the privilege of working with. Join us, as we continue to share the passion of making light work. A well lit passion.

CONTENTS

1

Mission Statement

3

Our Business

7

Organisational Structure

9

Our Services

13

Industry Applications

35

Key Partnerships

Our Vision

Mondoluce's vision is to provide quality, reliability and value through products and services we offer to all our clients.

We share the passion for making light work with those who understand the important role lighting plays in our built environment from an aesthetic, creative, innovative, sustainable and functional perspective.

We strive to nurture long-standing professional working relationships and, in the process, to be the best & most respected lighting provider.

COMPANY PROFILE

Mondoluce is a project lighting specialist with an extensive product range and industry knowledge.



Aubin Grove Train Station WA



Gateway Link Bridge WA

About us

We work side-by-side with our clients from specification to installation, to provide the best lighting design solution. Mondoluce offers several lighting design options so that our clients can choose the one that best suits their needs.

We are abreast of the latest innovations in lighting and technology and equipped to assist our clients in making well-informed decisions.

Our technical team is capable of making adaptations and modifications to existing products to suit the specific project requirements.

Quality and standardisation

We stand by every product we sell. The projects on which we collaborate testify to the power of lighting to deliver aesthetic and functional outcomes. Working with Mondoluce ensures you receive the best advice, products and outcome with remarkable results. Our Quality System is registered ISO9001:2015.

Social responsibility statement

Our Corporate Social Responsibility (CSR) statement reflects our responsibility toward our environment. Mondoluce is part of a bigger system of people, values, other organisations and nature. We believe the social responsibility of a business is to give back to the world just as it gives to us. Mondoluce takes this responsibility seriously.

Scope

Our policy expresses how our business functions internally and the way we interact with both partners and suppliers.

Policy elements

We want to be a responsible business that meets the highest standards of ethics and professionalism.

Our company's social responsibility falls into two categories: compliance and proactivity. Compliance refers to our company's commitment to legality and willingness to observe community values. Proactivity is every initiative to promote human rights, help communities and protect our natural environment.

Governance and risk management practices

Mondoluce strives to achieve better practice in the management of risks that threaten to adversely impact our business, its functions, objectives, operations, assets, staff, clients, or members of the public.

Mondoluce does all it can to ensure our activities do not harm our workers, consumers, or other people.

Risk management involves four steps (see Figure 1 below):

1. Identify hazards – find out what could cause harm
2. Assess risks – understand the likelihood of a hazard causing harm and how serious it could be,
3. Control risks – implement the most effective control measure that is reasonably practicable in the circumstances, and
4. Review control measures to ensure they are working as planned.

Management systems and policies

Our Quality Policy is defined and driven by the following management principles and behaviours:

- › Build a mutually beneficial relationship with our clients to ensure each project is a success through the understanding of the clients' needs and project requirements.
- › Achieve our commitment to quality, cost, and schedule.
- › Stand by our products, our promises and our advice.
- › Continue the systematic research and use of the best preventive practises at all levels to ensure reliable risk management.
- › Drive continual improvement and innovation based on efficient business processes, well-defined measurements, best practices, and customer surveys.
- › Develop staff competencies, creativity, empowerment and accountability through appropriate development programs that demonstrate active management involvement and commitment.

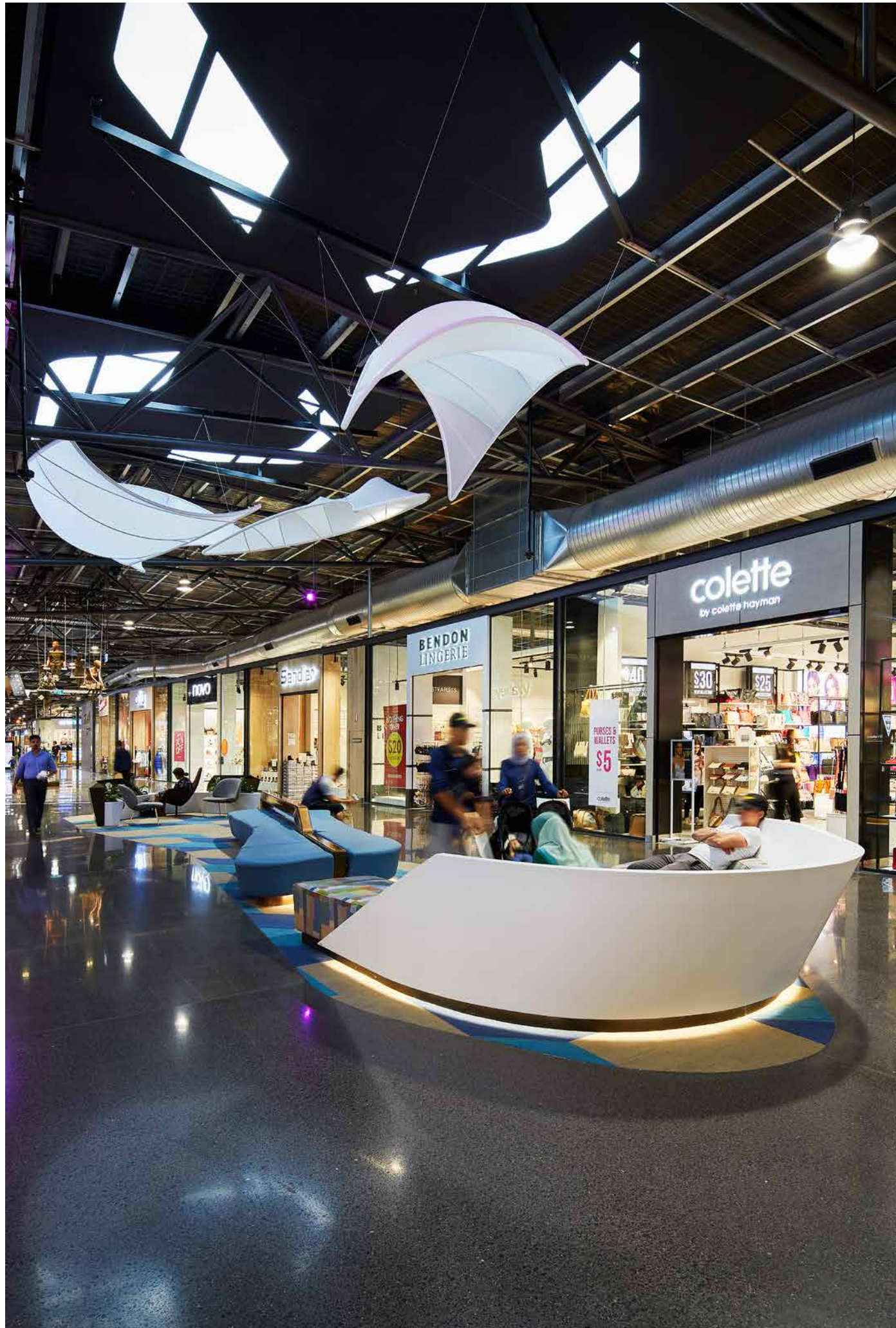
Awards and Accreditations

Mondoluce has provided world-class products and professional services for over 25 years. We are well-respected in Perth and proud of the many project collaborations that have gained local and international recognition. Mondoluce is a proudly Western Australian company who supports professional industry bodies such as the Australian Institute of Architects WA Chapter, Design Institute of Australia and the Australian Institute of Landscape Architects. Mondoluce believes that giving back to the community will ensure our business is thriving.

Some stand out projects include Prime House - awarded the 2019 MBA Award Best Office Fit Out \$10-\$20 Million and The State Buildings the 2016 WAAIA George Temple Poole Award.



Raine Square Redevelopment



Light with a purpose

Whether bringing aesthetic beauty or strategic functionality to a space, lighting plays a vital role. It adds depth and dimension, light and shade, and safety and confidence to workplaces, public areas and entertainment venues alike.

Mondoluce embraces the diverse roles that lighting plays. Providing highly functional and aesthetically brilliant solutions across a range of architectural, commercial, industrial and mining applications.

KEY PERSONNEL



Gerry de Wind
Managing Director



Damian de Wind
Project Lighting
(Clientele) Manager



Andrea de Wind
Project Lighting
(Brands) Manager



Jessica Swansen
Business Support
Manager



Ivan Mathias
Project Lighting
Specialist



Syazwan (Wan) Anuar
Client Liaison



Eliana Frasca
Business Support
Liaison



Jarrad Bowen
Project Lighting
Specialist



Kiara McIntyre
Client Liaison



Priscilla de Wind
Business Support
Liaison



Stephan Couani
Project Lighting
Specialist



Rui Shen
Client Liaison



Ken Nienaber
Warehouse Supervisor



Nik Gall
Brand and Marketing



Gary Lerm
Warehouse Storeperson

People matter at Mondoluce.

People matter at Mondoluce. It's our people who grow our business and determine both its success and the ultimate satisfaction of our clients. We don't simply train our people, we develop and nurture them to realise their full potential. This development is not only in the key areas of product and application knowledge, but across a range of facets that we believe contributes towards a fulfilling career path.

OUR SERVICES

From specification to installation

We continuously tailor the Mondoluce Process to guarantee the best practice outcome. While there are fundamental milestones for any project, these are not set in stone but reflect the unique requirements of your project, providing a seamless process from specification to installation.

There is no cookie-cutter process here. Some of our work begins as Design & Construct projects and evolves from the initial specification. Sometimes, there is an opportunity for solutions that save money, reduce the ongoing energy requirement, or maximise the lighting effect of the solution. When these opportunities present, we offer them as alternative solutions.

Specification

Our typical pipeline of work. These projects begin with design practitioners such as architects, electrical engineers or designers. They include the full range of the process from conception, design and specification to installation.

Design and Construct

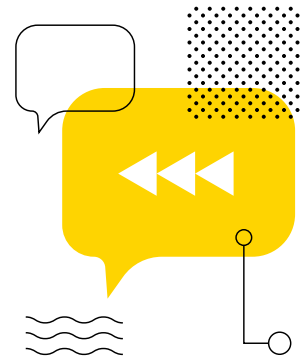
In these projects, Mondoluce is requested to provide an alternative lighting selection, to the available budget.

In both streams of operation, we follow a careful process to ensure predictable quality outcomes – one that is led by the demands and opportunities of a project, rather than being dictated by a rigid structure.



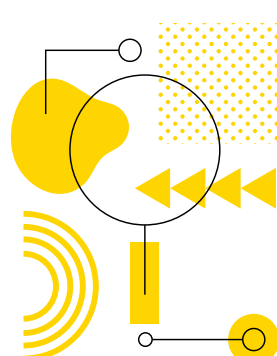
1. Discovery

In our first contact, our project lighting specialist will discuss your project needs. Our team of specialists have a broad range of experience with product, technology and innovation and can identify the optimal lighting solution for your project.



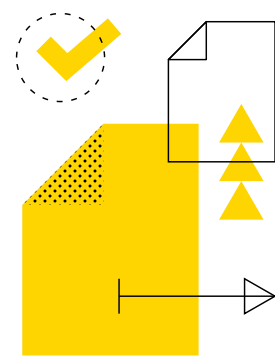
2. Briefing

In this phase, we discuss the specific project brief with you to provide advice, luminaire suggestions and lighting application assistance to suit the project requirements. Through gaining a clear understanding, we are able to provide a detailed and accurate lighting equipment selection for tender.



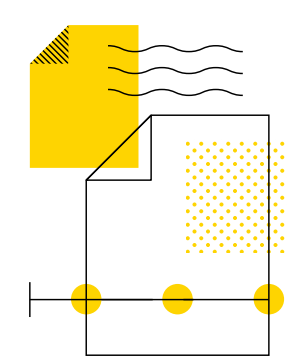
3. Spec/Tender

The project goes through to specification and tender process, and the initial Mondoluce project proposal is provided on request. We are contacted by industry and trades to submit our lighting proposal for their tender submission.



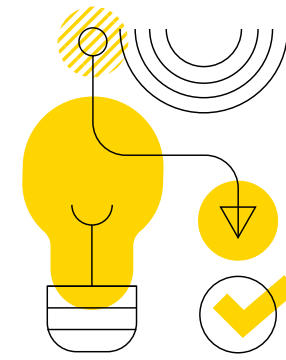
4. Contracts awarded

The builder and electrical sub-contractor are appointed, and negotiations begin to secure an order. Products may need to be re-selected depending on the budget and alternatives may be considered (in the case of design and construct procurement process).



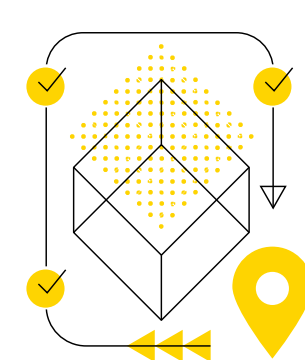
5. Purchase order

A requisition order is created and a product sample approval process undertaken through a data sheet or physical sample review.



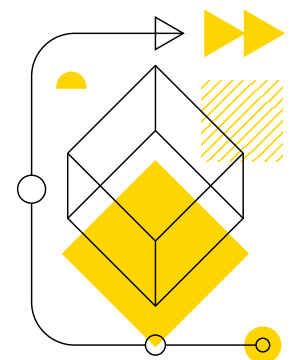
6. Approval

The order is placed after the sample approval process is finalised, and we work with you to supply the project to the scheduled dates.



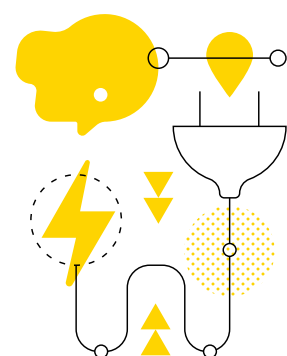
7. Order Tracking

You will have an appointed Client Liaison who works alongside the Project Lighting Specialist who will be in regular contact with you during the procurement process to update you on the status of your order and facilitate any logistical, technical or administrative questions about the project.



8. Delivery

Upon receiving the goods, Mondoluce will test, check off and label all products to ensure they meet the project specification. Any custom modifications are made at this point. Once all products are ready for delivery, a member of our warehouse team will make contact with the project manager for delivery. Once confirmed, goods are dispatched and the invoice forwarded to you.



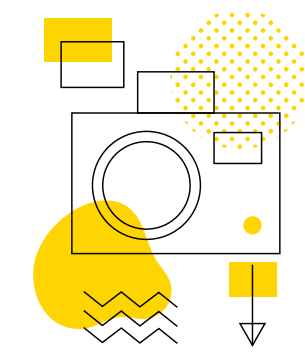
9. Site visit

Once your products are delivered, Mondoluce is available for installation support. We will troubleshoot any issues and concerns regarding installation (this occurs for most design and construct projects, as changes can occur during the construction process).



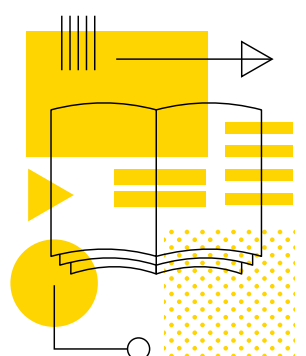
10. Check in

Mondoluce ensures that our products are installed correctly and provide after-sales service, commissioning, product data sheets and manuals to the appropriate person/s. We check in with our clients upon installation to ensure that the supplied products are operating or functioning as designed.



+ Photoshoot

Once the project is completed, we often arrange a photoshoot of the project. Mondoluce use professional photographers to capture the project to its full potential. Photographs are available upon request to all stakeholders of the project.*



+ Publication

In addition to a photoshoot, Mondoluce promotes the project through a variety of print and digital publications. Advertising and showcasing the project to other industry professionals and the wider business community.

(*Conditions may apply)

Partner in light.

Whether bringing aesthetic beauty or strategic functionality to a space, lighting plays a vital role. It adds depth and dimension, light and shade, and safety and confidence to workplaces, public areas and entertainment venues alike. Mondoluce embraces the diverse roles that lighting plays. Providing highly functional and aesthetically brilliant solutions across a range of architectural, commercial, industrial and mining applications.

mondoluce.com.au



OUR APPLICATIONS

Lighting applications by industry

Working



Hospitality and Living



Health and Aged Care



Infrastructure



Retail



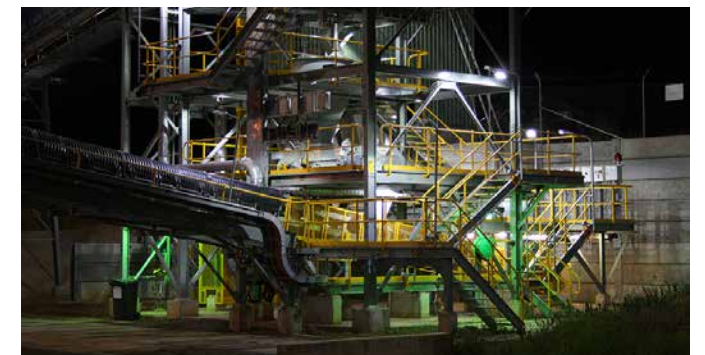
Urban



Sports and Recreation



Mining and Industry



Educational and Institutional



Culture



OUR APPLICATIONS

Working environments

“A solution that will add value to your facility, make your operation more energy efficient, minimise your carbon emissions and optimise visual comfort.”



IMPORTANT THINGS TO REMEMBER WHEN LIGHTING FOR WORKING APPLICATION:

- › The benefits of LED lighting as an energy efficient lighting solution
- › Creating an even perception of space
- › Utilising the best possible optic technology
- › Creating a working space that inspires
- › Capturing the personality of your business
- › Human Centric Lighting
- › Colour rendering
- › IoT (Internet of Things) – connectivity
- › Considering scalability and new innovation
- › Environmental implications

The best lighting solution for a working environment is multi-faceted. Monduluce can provide the lighting solution that will add value to your facility, make your operation more energy efficient, minimise your carbon emissions and optimise visual comfort. Colour rendering and consistency, human centric lighting and connectivity are all innovations to consider when forming your lighting solution.

Non-traditional workstations call for more innovative and user-friendly lighting that reduces carbon emission and improves energy efficiency by the use of Bluetooth control, occupancy sensors and daylight harvesting.

Wellness standard – dynamic lighting through general office lighting mimicking the circadian rhythm as well as lighting breakout spaces and green areas effectively to provide improved emotional and mental health and productivity of staff.

There are a couple of different light types that can incorporate the above that are great for working environments: general lighting and linear lights.

General lighting systems are constructed with direct and/or indirect light and wide flood optics. This combination ensures the entire environment is lit correctly and that you have the capability to highlight selected spaces. General lighting does not create visual paths or hierarchies, but it does light space evenly.

Linear lights are the linear shape light fixtures. They usually come in a long length and are installed as pendant, suspended or recessed versions. LED linear lights are more advantageous than other common light fixtures for building innovative, clean and dynamic lighting environments. Additionally, they are very user-friendly due to easy wiring and installation, which is helpful if upgrading your current light fittings.



Ceri Bass, Netherlands



Ceri Bass, Netherlands



Prime House Joondalup



Prime House Joondalup

Urban lighting



“Lights that can react and activate to movement are the perfect solution to urban applications.”

IMPORTANT THINGS TO REMEMBER WHEN LIGHTING FOR URBAN APPLICATION:

- › The benefits of LED lighting as an energy efficient lighting solution
- › Safety and functionality
- › Observing available technologies
- › Environmental implications
- › IP Rating

Lighting for urban application such as parks, community spaces and civic settings calls for a tool box full of solutions. Urban lighting should deliver a good quality of light, be cost effective and environmentally conscious, create comfortable visibility, provide security and be aesthetically beautiful or create visual impact. Lights that can react and activate to movement are the perfect solution to urban applications.

Lighting solutions for urban applications are similar to those for infrastructure applications. The advanced LED technologies available can provide ‘intelligent street lighting’ solutions that include programmable scheduling to dim and brighten the lighting over the course of the day. This type of control has wide reaching benefits that include reduction in energy consumption, safer environments and a better quality of light.

Pathway Lighting is one of the most important visual features in a garden during the day, whether it’s in the park or community space. The right outdoor pathway lighting will carry this visual impact over into the night. A pathway also needs to be practical:

people need to be able to find their way along it, and you want to be able to see people for security purposes.

Street lighting should add a sense of security for pathways and roads while also keeping with the urban scape. Many local governments are opting for sleek architectural poles to enhance the prestige of their roads, parks and squares that complement modern architectural post tops and streetlight fixtures.

For efficiency, solar pathway and street lighting is common, along with LED pathway lighting or low voltage pathway lighting. Consider these options when wishing to maximise style while minimising your impact on the environment.

Façade lighting is commonly designed to enhance the architecture and beauty of a buildings exterior whether it be a new or heritage building. Lighting the building façade can draw people in and create a sense of community and increase safety. There are many ways to light building façades – uplighting, wall grazing, spot and floodlighting.



Bayview Terrace, Claremont WA



Bayview Terrace, Claremont WA



Arthur Head, Fremantle WA



Arthur Head, Fremantle WA

OUR APPLICATIONS

Infrastructure lighting

“Finding the perfect balance between form and function when safety and functionality are paramount.”



IMPORTANT THINGS TO REMEMBER WHEN LIGHTING FOR INFRASTRUCTURE APPLICATION:

- › The benefits of LED lighting as an energy efficient lighting solution
- › Safety and functionality
- › Compliance with national lighting standards
- › Designing a holistic lighting solution
- › Testing for efficiency & maintainability
- › Black hole effect of entering a dark space from the light – underground car parks
- › IP Rating
- › IoT (Internet of Things) – connectivity
- › Impact on the performance and life of lighting fixtures over time due to factors such as accumulation of dirt, carbon exhaust, insects, wildlife and vandalism

Infrastructure includes roadways, sidewalks, access to buildings and car parks which can provide contrasting and challenging issues for your lighting design solution. Finding the perfect balance between form and function when safety and functionality are paramount, can be a hard task.

Full control over your infrastructure lighting is possible with smart lighting functionality. 'Intelligent street lighting' can detect when there is movement and brighten in response or dim when no activity is detected, generating massive savings for councils and towns.

Regulate luminaire up time and down time with 'smart street lighting' to take advantage of the natural light when it is available. LED technology includes programmable luminaires that dim and brighten according to a preset schedule.

There are a couple of different light styles that are great for infrastructure environments: predominately street / area lights, weatherproof lights (IP and IK), canopy lights and wall lights.

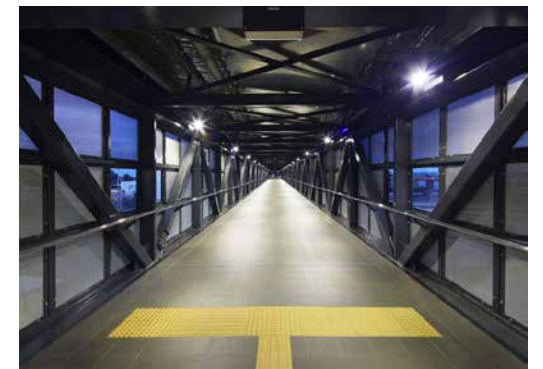
Street lights provide illumination for city roadways and sidewalk areas. The main purpose of street lighting is to provide comfortable visibility and public safety, while encouraging vehicular and pedestrian traffic. All lighting installed in the city is designed to meet the national lighting standards for visibility and reduce sky glow and glare.



Lakeside City of Joondalup WA



Aubin Grove Train Station WA



Aubin Grove Train Station WA



Gateway Link WA

OUR APPLICATIONS

Educational and Institutional

“Human-centric lighting and connectivity are all innovations to consider.”



IMPORTANT THINGS TO REMEMBER WHEN LIGHTING FOR EDUCATION APPLICATION:

- › The benefits of LED lighting as an energy efficient lighting solution
- › Cost effectiveness
- › Flicker-free luminaires
- › Prevention of eye fatigue
- › Creating a working space that inspires
- › Different solutions across the varied spaces within the facility
- › Maximising use of natural light
- › Safety and functionality
- › Observing available technologies
- › Environmental implications
- › Creating an even perception of space
- › Human Centric Lighting
- › Colour rendering
- › IoT (Internet of Things) – connectivity

Educational and Institutional facilities fulfil a unique role in our built environment and emphasise the importance of learning, belonging and community.

As the design of educational spaces shifts to be more sympathetic to student’s health and optimal learning, colour rendering and consistency, human centric lighting and connectivity are all innovations to consider when considering lighting options.

Monduluce can provide cost-effective LED lighting which aims to enhance the learning environment, help students feel safe on campus and strengthen a school’s brand and image.

Non-traditional workstations call for more innovative and user-friendly lighting that reduces carbon emission and improves energy efficiency by the use of Bluetooth control, occupancy sensors and daylight harvesting.

Wellness standard – dynamic lighting through general office lighting mimicking the circadian rhythm as well as lighting breakout spaces and green areas effectively to provide improved emotional and mental health and productivity of students.

General lighting systems are constructed with direct and/or indirect light and wide flood optics. This combination ensures the entire environment is lit correctly, and that you have the capability to highlight selected spaces. General lighting does not create visual paths or hierarchies, but it does light space evenly.

Linear lights are the linear shape light fixtures. They usually come with a long length and are installed as pendant, suspended or recessed versions. LED linear lights are advantageous than other common light fixtures for building innovative, clean and dynamic lighting environments. Additionally, they are very user-friendly due to easy wiring and installation, which is helpful if upgrading your current light fittings.



Joesph Banks College WA



Joesph Banks College WA



Trinity College WA



Trinity College WA

OUR APPLICATIONS

Retail

“Lighting for retail application calls for a comprehensive solution informed by form and function.”



IMPORTANT THINGS TO REMEMBER WHEN LIGHTING FOR RETAIL APPLICATION:

- › The benefits of LED lighting as an energy efficient lighting solution
- › Capturing the personality of your business
- › IoT (Internet of Things) – connectivity
- › Considering scalability and new innovation
- › Environmental implications
- › Flicker-free luminaires
- › Prevention of eye fatigue
- › Environmental implications
- › Different solutions across the varied spaces within the facility

It is important for retailers to create a comfortable environment for customers by optimising visual comfort, while showcasing the products in a positive light. The perfect lighting solution must be carefully designed to enhance consumer contentment and influence purchasing behaviour.

For this reason, lighting for retail application calls for a comprehensive solution informed by form and function, with general lighting illuminating throughout and accent lighting to highlight products. Monduluce have the expertise, experience and the products to provide you with the best solution.

Shopping Centres

Retailers are using lighting with greater impact transforming shopping centres into shopping and entertainment precincts. The external façade is often lit to dramatic effect to entice in the potential customers, while beautiful luminaires illuminate pathways to and from the entry ways. Lighting plays an important role in creating a comfortable food court and dining scene to entice customers to enjoy the full retail experience and maximise time spent in the shopping centres.

Areas to include in your shopping centre lighting plan:

- › Cove and pelmet
- › Mall areas
- › Display lighting
- › Feature window display
- › Food courts
- › Toilets and washrooms
- › Specific aisle lighting
- › Sign illumination
- › High ceiling and void
- › Storage areas
- › Façade lighting
- › Safety lighting
- › Car park

Showrooms

Luminaires with a high colour rendition are important when displaying merchandise to highlight product vibrancy and increase saleability. Choosing luminaires with a high CRI as well as the correct colour temperatures best suited to complement products are easily achieved with colour tunable white LED lights.



Raine Square, Perth WA



DFO, Perth WA



DFO, Perth WA



Forrest Chase Redevelopment

OUR APPLICATIONS

Cultural

“The evolution and progression to LED as a light source, offers substantial energy and maintenance costs savings.”



IMPORTANT THINGS TO REMEMBER WHEN LIGHTING FOR CULTURE APPLICATION:

- › The benefits of LED lighting as an energy efficient lighting solution
- › Capturing the personality of your business
- › IoT (Internet of Things) – connectivity
- › Considering scalability and new innovation
- › Environmental implications
- › Flicker-free luminaires
- › Prevention of eye fatigue
- › Colour rendering
- › Utilising the best possible optic technology
- › IP Rating

Over the years a majority of cultural applications such as auditoriums and theatres across Western Australia utilise incandescent or halogen lamps throughout their lobbies, function areas and the main performance areas. This is mainly due to the age of the theatre and the lighting and dimming technology available at the time. The evolution and progression to LED as a light source, for this application offers substantial energy and maintenance costs savings. However due to the complexity of dimming LED prohibits the upgrade on the existing dimming system. An LED lighting upgrade would also require the existing “phase cut” dimming system to be replaced and this will mean additional wiring and hardware, and result in a very costly exercise and render the total upgrade uneconomical.

LED light fittings require a remote driver that is paired to the LED Chip to drive it in its most efficient manner. The simple “Phase Cut” dimming system used on incandescent and halogen lamps, will not work effectively on standard LED drivers. Mondoluce collaborated with Lumitech to develop a system (LED Down Light and Electronic Ballast) to overcome this issue.

A range of LED downlights utilising the latest technology from Xicato in “High Colour Rendition” LED modules provide a lighting effect most suited to replacing existing halogen installations. Mondoluce has a range of low glare reflector systems that deliver excellent efficiencies to provide a lighting system to match or better the old technology Halogen system, with the added benefits of low maintenance, energy efficiency and long lamp life. Mondoluce has a wide range of wattages and beam distributions to suit all applications within many areas of auditoriums and theatres. This now enables the upgrade of auditorium and theatre lighting to an LED light source while maintaining existing dimming system within the auditorium and theatre.

Electronic engineers at Lumitech invested 18 months of research and development to perfect a Hybrid Electronic Ballast that will drive the Mondoluce range of LED downlights with full capability to smooth dimming on a “Phase Cut” Leading Edge dimming system. The Tauren E-B Electronic Ballast is “tuned” to the requirements of the LED downlight to provide maximum performance and energy efficiency. The Ballast has been certified with C Tick approval in accordance with Australian Standards.



West Australian Ballet Centre



His Majesty's Theatre, Perth WA



His Majesty's Theatre, Perth WA



West Australian Ballet Centre

OUR APPLICATIONS

Hospitality and Living

“Using lighting to create a distinctive and memorable experience for your guests.”



IMPORTANT THINGS TO REMEMBER WHEN LIGHTING FOR HOSPITALITY AND LIVING APPLICATION:

- › The benefits of LED lighting as an energy efficient lighting solution
- › Environmental implications
- › Colour rendering
- › Human Centric Lighting
- › Maximising use of natural light
- › Cost effectiveness

With hospitality application you can use well considered lighting design and product selection to welcome, guide, and entertain every visitor who walks through your door. Using lighting to create a distinctive and memorable experience for your guests, is the key to success that will ensure loyalty and enjoyment every time. From accent lighting in bedrooms to wayfinding and façade, make your space a destination to remember.

At Mondoluce, your bottom line is important. We have the solution that will keep your energy and operational costs down. LED lights are continuing to revolutionise the hospitality industry. The advancement of superior dimming technology and smart systems have made a massive difference to the way a hospitality business operates. Dimming settings can be used to create mood while reducing energy costs. Features such as automatic timers, scheduled dimming and app/interface-controlled lighting allow venue lighting to be adjusted with one click on a device.

In addition, dynamic lighting such as colour changing and human centric lighting (circadian rhythm) are the latest technologies available to implement into your business. Lighting can be used to influence our circadian rhythm (our body clock) and maintain the optimal condition for our health given that the majority of the day can be spent indoors. Fast food and take away restaurants use bright luminaires and stimulating colours to attract clientele and create a busy action-packed ambience, encouraging people to eat faster. While a fine dining restaurant would utilise dim lights to create an intimate, relaxing ambience that encourages diners to enjoy their meal and stay longer.



The Westin Hotel Entry, Perth WA



Mandoon Estate Homestead Brewery, Caversham WA



Residence, Mt Lawley, Perth WA



Mandoon Estate Wild Swan, Caversham WA

Health and Aged Care

“Human-centric lighting has particular importance for our sick and elderly.”



IMPORTANT THINGS TO REMEMBER WHEN LIGHTING FOR HEALTHCARE AND AGED CARE APPLICATION:

- › The benefits of LED lighting as an energy efficient lighting solution
- › Cost effectiveness
- › Flicker-free luminaires
- › Prevention of eye fatigue
- › Different solutions across the varied spaces within the facility
- › Maximising use of natural light
- › Safety and functionality
- › Observing available technologies
- › Environmental implications
- › Creating an even perception of space
- › Human Centric Lighting
- › Colour rendering
- › IoT (Internet of Things) – connectivity

Healthcare and Aged Care is a growing industry in Australia with the population living longer and different medical issues becoming apparent. Human Centric lighting has particular importance for our sick and elderly. Lighting can affect the body's internal clock (circadian rhythm) and create discomfort and heightened behaviour when not controlled effectively.

Research proves that varying light conditions can catalyse agitated behaviour in Alzheimer's sufferers, so the need for constant light is paramount. With the advancement in LED technology, we are able to address patient wellness by providing solutions that regulate light levels using lighting control systems.



The Autism Association of WA,



The Autism Association of WA,



St Ives Retirement Community, Carine WA



St Ives Retirement Community, Carine WA

OUR APPLICATIONS

Sports and Recreation

“Mondoluce brings LED lighting technology from leading international manufacturers to the Western Australian community.”



IMPORTANT THINGS TO REMEMBER WHEN LIGHTING FOR SPORTS AND RECREATION APPLICATION:

- › The benefits of LED lighting as an energy efficient lighting solution
- › Cost effectiveness
- › Safety and functionality
- › Different solutions across the varied spaces within the facility
- › Observing available technologies
- › Environmental implications
- › IP Rating
- › Lighting standards for sporting applications

Most sports stadiums or fields have a variety of environments each requiring a tailored lighting solution – the field or court, spectator seating, vehicular and pedestrian access ways, car parking, training facilities and amenities.

The lighting of the field or court must be to broadcast standard and lighting levels must be to a certain intensity for compliance. Mondoluce can recommend the best product to suit your sport and recreation application by designing accurate to scale lighting heat maps that illustrate the coverage of each luminaire.

Flood lights provide a ‘flood’ of lighting to a general area however this does not mean that glare and spill light should be accepted. Specific lens and reflectors create various optics to throw light where it is needed and shielded from light where it is not.

This enables high visibility which

in turn promotes safety without compromising on aesthetic and ambience to the public realm.

With a worldwide focus on being “green”, more lighting designers, engineers and facility managers are implementing energy efficient lighting solutions. Whether it be upgrades to existing or for new installations, Mondoluce brings LED lighting technology from leading international manufacturers to the Western Australian community.



Scarborough Beach Pool, WA



Scarborough Civic Centre, WA



Scarborough Civic Centre, WA



Scarborough Civic Centre, WA

Mining and Industry

“Our solution will give you the confidence that your team and your assets are supported during day-to-day operations.”



IMPORTANT THINGS TO REMEMBER WHEN LIGHTING FOR MINING AND INDUSTRY APPLICATION:

- › The benefits of LED lighting as an energy efficient lighting solution
- › Cost effectiveness
- › Safety and functionality
- › Different solutions across the varied spaces within the facility
- › Observing available technologies
- › Environmental implications
- › IP Rating
- › Lighting standards for mining and industrial applications

Safety is critical for mining and industrial applications. The presence of hazardous, flammable or combustible vapours, liquids and gases elevate the risk involved and the need for an effective specialty lighting response.

Mine sites, industrial areas and chemical processing plants operate 24/7 and are regulated by zone specific lighting standards. Monduluce can provide the highest quality of product to suit your application, while meeting safety standards, performance standards and safety audit requirements. Our solution will give you the confidence that your team and your assets are supported during day-to-day operations.

Output and efficiency can be maximised with an LED lighting solution. Operations can continue on into the night, with energy efficient luminaires. Lighting control systems give managers the power to schedule scenes and optimise energy use.



Murray Engineering, Pinjarra WA



Murray Engineering, Pinjarra WA



Queensland Energy Resources, Paraho II



Queensland Energy Resources, Paraho II

KEY PARTNERSHIPS

Mondoluce has long association with many quality lighting brands and is the exclusive distributor in WA for the brands below.

Your lighting partner.

Our business is founded on long-standing relationships and strong partnerships.

We collaborate with a spectrum of key decision makers from design disciplines, trade professionals and industry bodies.

We share our passion with those who understand the significant role lighting plays from an aesthetic and functional perspective.













mondoluce.com.au

Mondoluce office

23 Trade Road
Malaga WA 6090

Postal address
PO Box 2705
Malaga WA 6944

T +61 08 9321 0101
F +61 08 9321 3430
lighting@mondoluce.com.au

ABN 14 336 408 099
ACN 067 958 874

