

# AeroFlood - High Powered LED Floodlight

Advanced heat transfer technology, means the AeroFlood has lighter weight, less sail area and more efficient heat dissipation.

## APPLICATIONS

- Airports, Ports, High Mast and Crane
- Maritime including Shipboard
- Industrial and Mining
- Sport and Recreation
- Architectural Façade
- Parks and Extensive open Areas

**A WELL LIT  
PASSION**



# AeroFlood High Powered LED Floodlight

Advanced heat transfer technology, means that the AeroFlood has lighter weight, less sail area and more efficient heat dissipation.

## OVERVIEW

The AeroFlood LED series is distinctly different from other LED floodlights in how it looks, how it performs and the extraordinary cost saving benefits it provides. The key difference, compared to most LED floods which use cast aluminium cases, is the unique and patented multi-fin aluminium heatsink developed by Australian aerospace specialists. The fins, combined with advanced heat transfer technology, means that the AeroFlood has lighter weight, less sail area and more efficient heat dissipation than most other LED flood lights of comparable lumen output.

The AeroFlood uses high quality LEDs and lenses to provide compliant lighting solutions for sports ovals and sports courts. LED flood lighting typically provides an electrical energy saving of over 40% compared to metal halide flood lighting. The AeroFlood provides further cost savings because its design characteristics reduce the cost of change over from metal halide floods or the cost of a new installation.

## BENEFITS

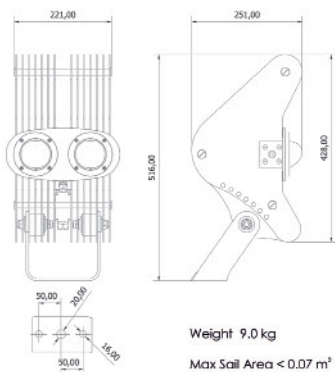
Most LED flood lights are physically larger and heavier than the comparable lumen output metal halide flood lights. Thus, changing over to LED lighting often requires demolition of existing support structures and installation of new poles. However, the characteristics of the AeroFlood mean that, in most situations, there is no need to change the supporting structure – this can be **a significant cost saving in labour and new poles.**

For new sports lighting installations, the light weight, low sail area of the AeroFlood means that they can be installed on more slender poles than usually required for LED flood lights. **The cost saving on the supporting structure can be substantial.**

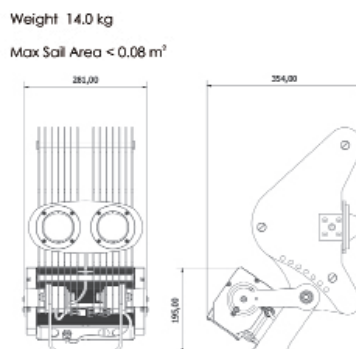
Excellent thermal dissipation means the **AeroFlood** is easily **able to cope with the Australian hot climate.** The alloy construction, low sail area light weight means it is **especially suited to windy coastal high mast applications.**



## AEROFLOOD 600



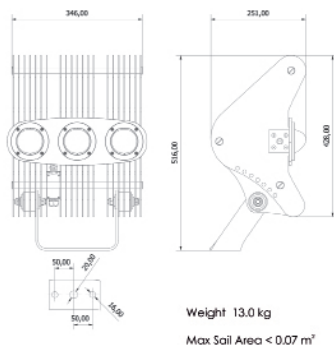
### DRIVER MODULE INSTALLED



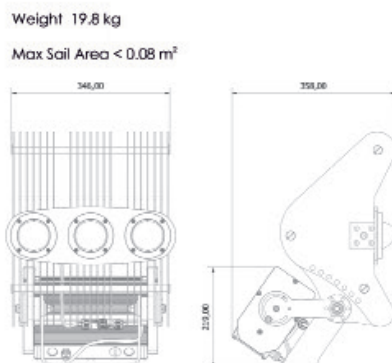
### PERFORMANCE SUMMARY

- Delivered Light Output 79,950 lm
- Luminaire Input Power 620 Watts
- Input Voltage 90 - 305 Vac
- Frequency 47 - 63 Hz
- Power Factor 0.96
- Light Source Citizen CLU058
- CRI Ra 70 with 90 option to satisfy media standards
- CCT 5000K @ CRI 70
- Efficacy >128 lumens/watt
- Working Life > 70,000 Hours @ 40°C
- Operating Temperature -30 to 53°C (No Lumen Loss)
- 600S also available

## AEROFLOOD 900



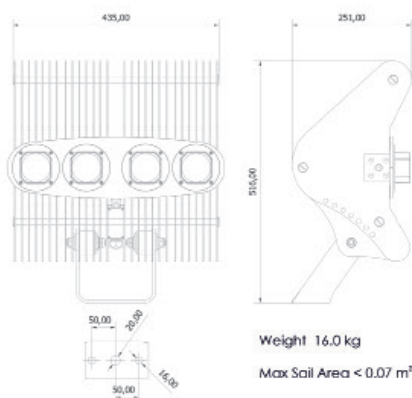
### DRIVER MODULE INSTALLED



### PERFORMANCE SUMMARY

- Delivered Light Output 119,905 Lm
- Luminaire Input Power 935 Watts
- Input Voltage 90 - 305 Vac
- Frequency 47 - 63 Hz
- Power Factor 0.96
- Light Source Citizen CLU058
- CRI Ra 70 with 90 option to satisfy media standards
- CCT 5000K @ CRI 70
- Efficacy >128 lumens/watt
- Working Life > 70,000 Hours @ 40°C
- Operating Temperature -30 to 53°C (No Lumen Loss)
- 900S also available

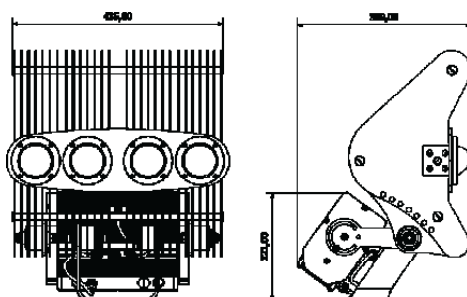
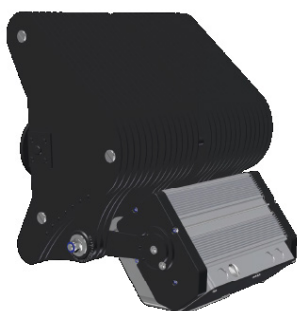
## AEROFLOOD 1200



### PERFORMANCE SUMMARY

- Delivered Light Output 159,899 Lm
- Luminaire Input Power 1240 Watts
- Input Voltage 90 – 305 Vac
- Frequency 47 – 63 Hz
- Power Factor 0.96
- Light Source Citizen CLU058
- CRI Ra 70 with 90 option to satisfy media standards
- CCT 5000K @ CRI 70
- Efficacy >128 lumens/watt
- Working Life > 70,000 Hours @ 40°C
- Operating Temperature -30 to 53°C (No Lumen Loss)
- 1200S also available

### DRIVER MODULE INSTALLED

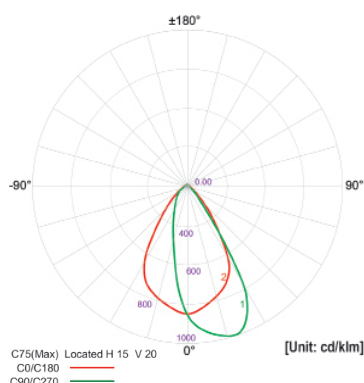


### OPTICS 600, 900, 1200

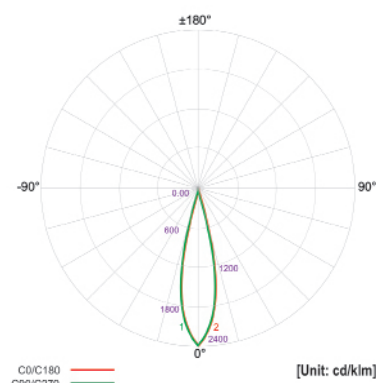
Standard AF Series Floodlights are fitted with the PL533G070040L general purpose flood lens. However, custom solutions for demanding projects are easily cooperatively developed.

### OPTICS 600S, 900S, 1200S

AF Series Projectors are fitted with the Ledil FN16258\_STELLA-RS lens. This 90mm free form silicone lens delivers a high intensity peak with minimum spill light and glare making it ideal for stadiums and high mast applications.



AeroFlood 600, 900, 1200

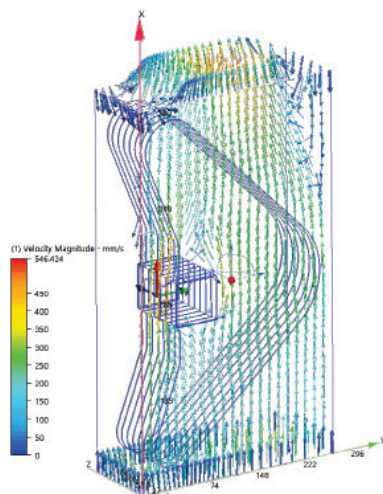


AeroFlood 600S, 900S, 1200S

### THERMAL MANAGEMENT

As thermal management is key to assuring proper LED lumen maintenance and long life, the designers embarked on a quest to develop a heat sink that would not only accommodate the ever increasing power requirements of COB's but also be simple and cost effective to manufacture and bring to market.

After 3 years of intensive R&D, they achieved the goal and, to date, have been awarded Australian and US patents for the design.



+61 8 9321 0101

mondoluce.com.au

mondoluce.perth

10 Weir Road Malaga  
Perth WA 6090