

PKG-304-5M-DM

304 Series™ Parking Structure Luminaire – Type V Medium – Direct Mount

Product Description

Slim, low profile design. Luminaire is constructed from rugged die cast and extruded aluminum components. LED driver is mounted in a sealed weathertight center chamber that allows for access from below the luminaire. High performance aluminum heat sinks specifically designed for LED parking structure application. Mounting brackets designed to mount directly over existing single gang and octagonal junction boxes for direct mount.

Performance Summary

Utilizes BetaLED® Technology

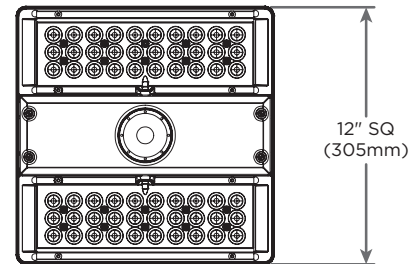
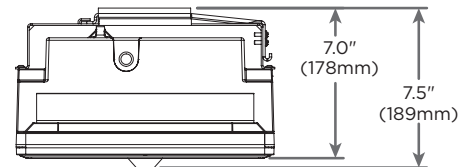
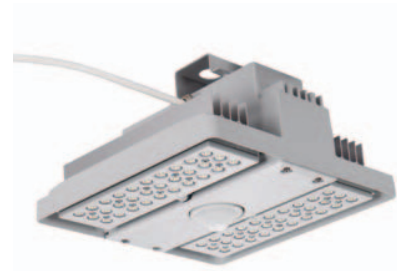
Patented NanoOptic® Product Technology

Made in the U.S.A. of U.S. and imported parts

CRI: Minimum 70 CRI

CCT: 5700K (+ / - 500K) Standard, 4000K (+ / - 300K)

Limited Warranty*: 10 years on luminaire / 10 years on Colorfast DeltaGuard® finish



Ordering Information

Example: PKG-304-5M-DM-04-E-UL-SV-350-OPTIONS

PKG-304	5M	DM		E				
Product	Optic	Mounting	LED Count (x10)	Series	Voltage	Color Options	Drive Current	Options
PKG-304	5M Type V Medium	DM Direct Mount	04 06	E	UL Universal 120-277V UH Universal 347-480V	SV Silver (Standard) WH White BK Black BZ Bronze PB Platinum Bronze	700 700mA (Standard) 525 525mA 350 350mA	40K 4000K Color Temperature - Color temperature per fixture DIM 0-10V Dimming - Control by others - Refer to dimming spec sheet for availability and additional information - Can't exceed specified drive current F Fuse - When code dictates fusing use time delay fuse - Not available with all multi-level options. Refer to multi-level spec sheet for availability and additional information ML Multi-Level - Refer to multi-level spec sheet for availability and additional information J Alternate Junction Box mounting

* See www.cree.com/lighting/products/warranty for warranty terms



Rev. Date: 06/25/13



Product Specifications

CONSTRUCTION & MATERIALS

- Slim, low profile design
- Constructed from rugged die cast and extruded aluminum components
- LED driver is mounted in a sealed weathertight center chamber that allows for access from below the luminaire
- High performance heat sinks specifically designed for LED parking structure application
- Mounting bracket is designed to mount directly over existing single gang and octagonal junction boxes for direct mount
- Exclusive Colorfast DeltaGuard® finish features an E-Coat epoxy primer with an ultra-durable powder topcoat, providing excellent resistance to corrosion, ultraviolet degradation and abrasion. Standard is silver. Bronze, black, white, and platinum bronze are also available

ELECTRICAL SYSTEM

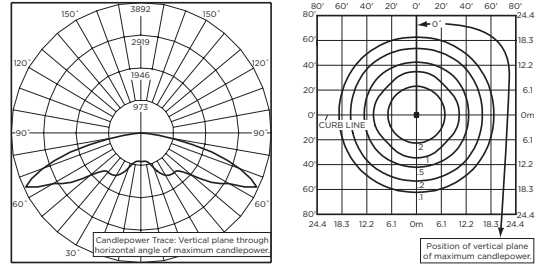
- **Input Voltage:** 120-277V or 347-480V, 50 / 60Hz, Class 1 drivers
- **Power Factor:** > 0.9 at full load
- **Total Harmonic Distortion:** < 20% at full load
- Integral 10kV surge suppression protection standard
- To address inrush current, slow blow fuse or type C / D breaker should be used

REGULATORY & VOLUNTARY QUALIFICATIONS

- cULus Listed
- Suitable for wet locations
- Enclosure rated IP66 per IEC 60529
- Consult factory for CE Certified products
- 10kV surge suppression protection tested in accordance with IEEE / ANSI C62.41.2
- Luminaire and finish endurance tested to withstand 5,000 hours of elevated ambient salt fog conditions as defined in ASTM Standard B 117
- Pending product qualification on the DesignLights Consortium ("DLC") Qualified Products List ("QPL")
- RoHS Compliant
- Meets Buy American requirements within ARRA

Photometry

All published luminaire photometric testing performed to IESNA LM-79-08 standards by a NVLAP certified laboratory.



ITL Test Report #: 77285
 PKG-304-5M-**-06-E-UL-700-40K
 Initial Delivered Lumens: 11,681

PKG-304-5M-**-06-E-UL-700-40K
 Mounting Height: 15' (4.6m)
 Initial Delivered Lumens: 11,625
 Initial FC at grade

IES Files

To obtain an IES file specific to your project consult:
<http://www.cree.com/lighting/tools-and-support/exterior-ies-configuration-tool>

Lumen Output, Electrical, and Lumen Maintenance Data

Type V Medium Distribution												
LED Count (x10)	5700K		4000K		System Watts 120-480V	TOTAL CURRENT						50K Hours Projected Lumen Maintenance Factor*** @ 15°C (59°F)
	Initial Delivered Lumens*	BUG Ratings** Per TM-15-11	Initial Delivered Lumens*	BUG Ratings** Per TM-15-11		120V	208V	240V	277V	347V	480V	
350mA @ 25°C (77°F)												
04	4,771	B3 U1 G1	4,595	B3 U1 G1	46	0.39	0.24	0.22	0.21	0.15	0.12	94%
06	7,101	B3 U1 G2	6,838	B3 U1 G1	69	0.57	0.34	0.30	0.27	0.21	0.16	
525mA @ 25°C (77°F)												
04	6,680	B3 U1 G1	6,433	B3 U1 G1	71	0.59	0.35	0.31	0.28	0.21	0.16	93%
06	9,942	B3 U1 G2	9,574	B3 U1 G2	101	0.84	0.49	0.43	0.38	0.30	0.22	
700mA @ 25°C (77°F)												
04	8,111	B3 U1 G2	7,811	B3 U1 G2	94	0.79	0.46	0.40	0.36	0.28	0.21	91%
06	12,072	B4 U1 G2	11,625	B4 U1 G2	135	1.14	0.65	0.57	0.50	0.40	0.29	

* Actual production yield may vary between -4 and +10% of initial delivered lumens.
 ** For more information on the IES BUG (Backlight-Uplight-Glare) Rating visit www.iesna.org/PDF/Erratas/TM-15-11BugRatingsAddendum.pdf.
 *** For recommended lumen maintenance factor data see TD-13. Calculated L70 based on 6,000 hours LM-80-08 testing: > 150,000 hours.



PKG-304-5S-DM

304 Series™ Parking Structure Luminaire – Type V Short – Direct Mount

Product Description

Slim, low profile design. Luminaire is constructed from rugged die cast and extruded aluminum components. LED driver is mounted in a sealed weathertight center chamber that allows for access from below the luminaire. High performance aluminum heat sinks specifically designed for LED parking structure application. Mounting brackets designed to mount directly over existing single gang and octagonal junction boxes for direct mount.

Performance Summary

Utilizes BetaLED® Technology

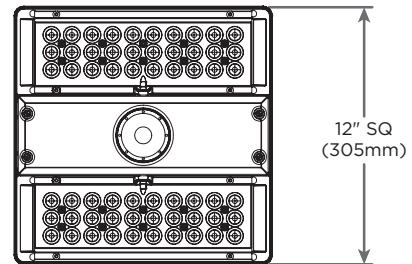
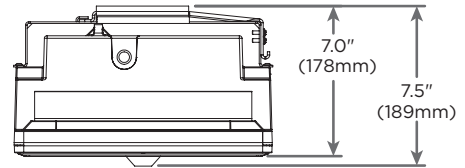
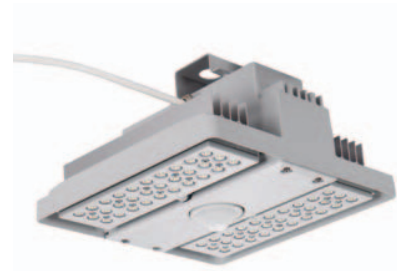
Patented NanoOptic® Product Technology

Made in the U.S.A. of U.S. and imported parts

CRI: Minimum 70 CRI

CCT: 5700K (+ / - 500K) Standard, 4000K (+ / - 300K)

Limited Warranty: 10 years on luminaire / 10 years on Colorfast DeltaGuard® finish



Ordering Information

Example: PKG-304-5S-DM-04-E-UL-SV-350-OPTIONS

PKG-304	5S	DM		E				
Product	Optic	Mounting	LED Count (x10)	Series	Voltage	Color Options	Drive Current	Options
PKG-304	5S Type V Short	DM Direct Mount	04 06	E	UL Universal 120-277V UH Universal 347-480V	SV Silver (Standard) WH White BK Black BZ Bronze PB Platinum Bronze	700 700mA (Standard) 525 525mA 350 350mA	40K 4000K Color Temperature - Color temperature per fixture DIM 0-10V Dimming - Control by others - Refer to dimming spec sheet for availability and additional information - Can't exceed specified drive current F Fuse - When code dictates fusing use time delay fuse - Not available with all multi-level options. Refer to multi-level spec sheet for availability and additional information ML Multi-Level - Refer to multi-level spec sheet for availability and additional information J Alternate Junction Box mounting

† See www.cree.com/lighting/products/warranty for warranty terms



Rev. Date: 06/25/13



Product Specifications

CONSTRUCTION & MATERIALS

- Slim, low profile design
- Constructed from rugged die cast and extruded aluminum components
- LED driver is mounted in a sealed weathertight center chamber that allows for access from below the luminaire
- High performance heat sinks specifically designed for LED parking structure application
- Mounting bracket is designed to mount directly over existing single gang and octagonal junction boxes for direct mount
- Exclusive Colorfast DeltaGuard® finish features an E-Coat epoxy primer with an ultra-durable powder topcoat, providing excellent resistance to corrosion, ultraviolet degradation and abrasion. Standard is silver. Bronze, black, white, and platinum bronze are also available

ELECTRICAL SYSTEM

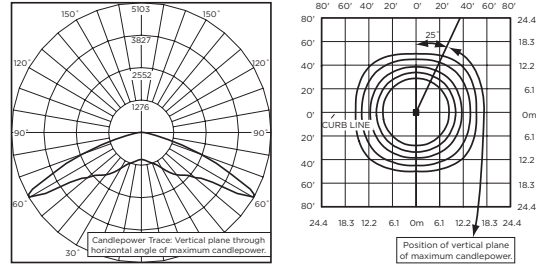
- **Input Voltage:** 120-277V or 347-480V, 50 / 60Hz, Class 1 drivers
- **Power Factor:** > 0.9 at full load
- **Total Harmonic Distortion:** < 20% at full load
- Integral 10kV surge suppression protection standard
- To address inrush current, slow blow fuse or type C / D breaker should be used

REGULATORY & VOLUNTARY QUALIFICATIONS

- cULus Listed
- Suitable for wet locations
- Enclosure rated IP66 per IEC 60529
- Consult factory for CE Certified products
- 10kV surge suppression protection tested in accordance with IEEE / ANSI C62.41.2
- Luminaire and finish endurance tested to withstand 5,000 hours of elevated ambient salt fog conditions as defined in ASTM Standard B 117
- Pending product qualification on the DesignLights Consortium ("DLC") Qualified Products List ("QPL")
- RoHS Compliant
- Meets Buy American requirements within ARRA

Photometry

All published luminaire photometric testing performed to IESNA LM-79-08 standards by a NVLAP certified laboratory.



ITL Test Report #: 76763
 STR-LWY-5S-**-06-E-UL-700-40K
 Initial Delivered Lumens: 12,780

PKG-304-5S-**-06-E-UL-700
 Mounting Height: 15' (4.6m)
 Initial Delivered Lumens: 12,917
 Initial FC at grade

IES Files

To obtain an IES file specific to your project consult:
<http://www.cree.com/lighting/tools-and-support/exterior-ies-configuration-tool>

Lumen Output, Electrical, and Lumen Maintenance Data

LED Count (x10)	Type V Short Distribution										50K Hours Projected Lumen Maintenance Factor*** @ 15°C (59°F)	
	5700K		4000K		System Watts 120-480V	TOTAL CURRENT						
	Initial Delivered Lumens*	BUG Ratings** Per TM-15-11	Initial Delivered Lumens*	BUG Ratings** Per TM-15-11		120V	208V	240V	277V	347V		480V
350mA @ 25°C (77°F)												
04	5,302	B2 U1 G1	5,105	B2 U1 G1	46	0.39	0.24	0.22	0.21	0.15	0.12	94%
06	7,890	B3 U1 G1	7,598	B3 U1 G1	69	0.57	0.34	0.30	0.27	0.21	0.16	
525mA @ 25°C (77°F)												
04	7,422	B3 U1 G1	7,147	B3 U1 G1	71	0.59	0.35	0.31	0.28	0.21	0.16	93%
06	11,046	B3 U1 G2	10,637	B3 U1 G2	101	0.84	0.49	0.43	0.38	0.30	0.22	
700mA @ 25°C (77°F)												
04	9,013	B3 U1 G1	8,679	B3 U1 G1	94	0.79	0.46	0.40	0.36	0.28	0.21	91%
06	13,413	B4 U1 G2	12,917	B3 U1 G2	135	1.14	0.65	0.57	0.50	0.40	0.29	

* Actual production yield may vary between -4 and +10% of initial delivered lumens.
 ** For more information on the IES BUG (Backlight-Uplight-Glare) Rating visit www.iesna.org/PDF/Erratas/TM-15-11BugRatingsAddendum.pdf.
 *** For recommended lumen maintenance factor data see TD-13. Calculated L70 based on 6,000 hours LM-80-08 testing: > 150,000 hours.



PKG-304-PS-DM

304 Series™ Parking Structure Luminaire – Petroleum Symmetric – Direct Mount

Product Description

Slim, low profile design. Luminaire is constructed from rugged die cast and extruded aluminum components. LED driver is mounted in a sealed weathertight center chamber that allows for access from below the luminaire. High performance aluminum heat sinks specifically designed for LED parking structure application. Mounting brackets designed to mount directly over existing single gang and octagonal junction boxes for direct mount.

Performance Summary

Utilizes BetaLED® Technology

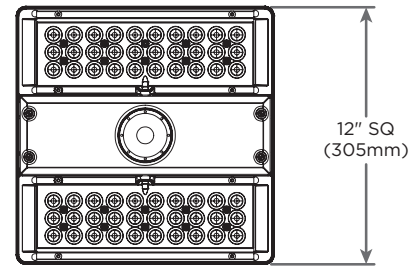
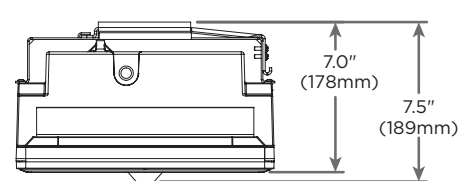
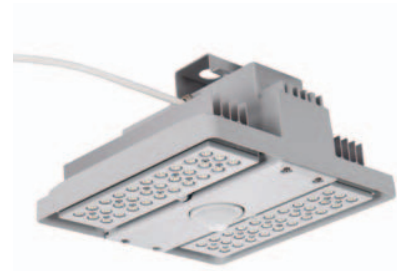
Patented NanoOptic® Product Technology

Made in the U.S.A. of U.S. and imported parts

CRI: Minimum 70 CRI

CCT: 5700K (+ / - 500K) Standard, 4000K (+ / - 300K)

Limited Warranty: 10 years on luminaire / 10 years on Colorfast DeltaGuard® finish



Ordering Information

Example: PKG-304-PS-DM-04-E-UL-SV-350-OPTIONS

Product	Optic	Mounting	LED Count (x10)	Series	Voltage	Color Options	Drive Current	Options
PKG-304	PS Petroleum Symmetric	DM Direct Mount	04 06	E	UL Universal 120-277V UH Universal 347-480V	SV Silver (Standard) WH White BK Black BZ Bronze PB Platinum Bronze	700 700mA (Standard) 525 525mA 350 350mA	40K 4000K Color Temperature - Color temperature per fixture DIM 0-10V Dimming - Control by others - Refer to dimming spec sheet for availability and additional information - Can't exceed specified drive current F Fuse - When code dictates fusing use time delay fuse - Not available with all multi-level options. Refer to multi-level spec sheet for availability and additional information ML Multi-Level - Refer to multi-level spec sheet for availability and additional information J Alternate Junction Box mounting

† See www.cree.com/lighting/products/warranty for warranty terms



Rev. Date: 06/25/13



Product Specifications

CONSTRUCTION & MATERIALS

- Slim, low profile design
- Constructed from rugged die cast and extruded aluminum components
- LED driver is mounted in a sealed weathertight center chamber that allows for access from below the luminaire
- High performance heat sinks specifically designed for LED parking structure application
- Mounting bracket is designed to mount directly over existing single gang and octagonal junction boxes for direct mount
- Exclusive Colorfast DeltaGuard® finish features an E-Coat epoxy primer with an ultra-durable powder topcoat, providing excellent resistance to corrosion, ultraviolet degradation and abrasion. Standard is silver. Bronze, black, white, and platinum bronze are also available

ELECTRICAL SYSTEM

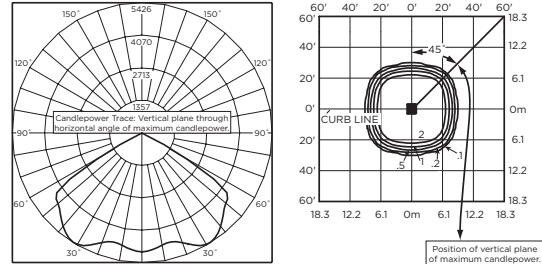
- **Input Voltage:** 120-277V or 347-480V, 50 / 60Hz, Class 1 drivers
- **Power Factor:** > 0.9 at full load
- **Total Harmonic Distortion:** < 20% at full load
- Integral 10kV surge suppression protection standard
- To address inrush current, slow blow fuse or type C / D breaker should be used

REGULATORY & VOLUNTARY QUALIFICATIONS

- cULus Listed
- Suitable for wet locations
- Enclosure rated IP66 per IEC 60529
- Consult factory for CE Certified products
- 10kV surge suppression protection tested in accordance with IEEE / ANSI C62.41.2
- Luminaire and finish endurance tested to withstand 5,000 hours of elevated ambient salt fog conditions as defined in ASTM Standard B 117
- Pending product qualification on the DesignLights Consortium ("DLC") Qualified Products List ("QPL")
- RoHS Compliant
- Meets Buy American requirements within ARRA

Photometry

All published luminaire photometric testing performed to IESNA LM-79-08 standards by a NVLAP certified laboratory.



ITL Test Report #: 76940
 CAN-304-PS-**-06-E-UL-700-40K
 Initial Delivered Lumens: 13,581

PKG-304-PS-**-06-E-UL-700-40K
 Mounting Height: 15' (4.6m)
 Initial Delivered Lumens: 13,204
 Initial FC at grade

IES Files

To obtain an IES file specific to your project consult:
<http://www.cree.com/lighting/tools-and-support/exterior-ies-configuration-tool>

Lumen Output, Electrical, and Lumen Maintenance Data

Petroleum Symmetric Distribution												
LED Count (x10)	5700K		4000K		System Watts 120-480V	TOTAL CURRENT						50K Hours Projected Lumen Maintenance Factor*** @ 15°C (59°F)
	Initial Delivered Lumens*	BUG Ratings** Per TM-15-11	Initial Delivered Lumens*	BUG Ratings** Per TM-15-11		120V	208V	240V	277V	347V	480V	
350mA @ 25°C (77°F)												
04	5,419	B2 U0 G0	5,219	B2 U0 G0	46	0.39	0.24	0.22	0.21	0.15	0.12	94%
06	8,066	B3 U0 G0	7,767	B3 U0 G0	69	0.57	0.34	0.30	0.27	0.21	0.16	
525mA @ 25°C (77°F)												
04	7,587	B3 U0 G0	7,306	B3 U0 G0	71	0.59	0.35	0.31	0.28	0.21	0.16	93%
06	11,292	B3 U0 G0	10,874	B3 U0 G0	101	0.84	0.49	0.43	0.38	0.30	0.22	
700mA @ 25°C (77°F)												
04	9,213	B3 U0 G0	8,872	B3 U0 G0	94	0.79	0.46	0.40	0.36	0.28	0.21	91%
06	13,712	B3 U0 G0	13,204	B3 U0 G0	135	1.14	0.65	0.57	0.50	0.40	0.29	

* Actual production yield may vary between -4 and +10% of initial delivered lumens.
 ** For more information on the IES BUG (Backlight-Uplight-Glare) Rating visit www.iesna.org/PDF/Erratas/TM-15-11BugRatingsAddendum.pdf.
 *** For recommended lumen maintenance factor data see TD-13. Calculated L70 based on 6,000 hours LM-80-08 testing: > 150,000 hours.



PKG-304-SL-DM

304 Series™ Parking Structure Luminaire – Sparkle Petroleum – Direct Mount

Product Description

Slim, low profile design. Luminaire is constructed from rugged die cast and extruded aluminum components. LED driver is mounted in a sealed weathertight center chamber that allows for access from below the luminaire. High performance aluminum heat sinks specifically designed for LED parking structure application. Mounting brackets designed to mount directly over existing single gang and octagonal junction boxes for direct mount.

Performance Summary

Utilizes BetaLED® Technology

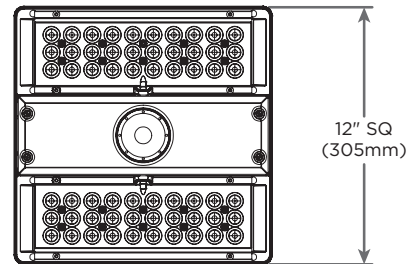
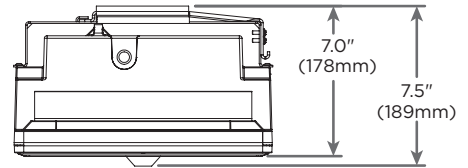
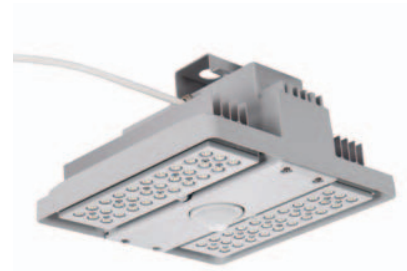
Patented NanoOptic® Product Technology

Made in the U.S.A. of U.S. and imported parts

CRI: Minimum 70 CRI

CCT: 5700K (+ / - 500K) Standard, 4000K (+ / - 300K)

Limited Warranty*: 10 years on luminaire / 10 years on Colorfast DeltaGuard® finish



Ordering Information

Example: PKG-304-SL-DM-04-E-UL-SV-350-OPTIONS

PKG-304	SL	DM		E				
Product	Optic	Mounting	LED Count (x10)	Series	Voltage	Color Options	Drive Current	Options
PKG-304	SL Sparkle Petroleum	DM Direct Mount	04 06	E	UL Universal 120-277V UH Universal 347-480V	SV Silver (Standard) WH White BK Black BZ Bronze PB Platinum Bronze	700 700mA (Standard) 525 525mA 350 350mA	40K 4000K Color Temperature - Color temperature per fixture DIM 0-10V Dimming - Control by others - Refer to dimming spec sheet for availability and additional information - Can't exceed specified drive current F Fuse - When code dictates fusing use time delay fuse - Not available with all multi-level options. Refer to multi-level spec sheet for availability and additional information ML Multi-Level - Refer to multi-level spec sheet for availability and additional information J Alternate Junction Box mounting

* See www.cree.com/lighting/products/warranty for warranty terms



Rev. Date: 06/25/13



Product Specifications

CONSTRUCTION & MATERIALS

- Slim, low profile design
- Constructed from rugged die cast and extruded aluminum components
- LED driver is mounted in a sealed weathertight center chamber that allows for access from below the luminaire
- High performance heat sinks specifically designed for LED parking structure application
- Mounting bracket is designed to mount directly over existing single gang and octagonal junction boxes for direct mount
- Exclusive Colorfast DeltaGuard® finish features an E-Coat epoxy primer with an ultra-durable powder topcoat, providing excellent resistance to corrosion, ultraviolet degradation and abrasion. Standard is silver. Bronze, black, white, and platinum bronze are also available

ELECTRICAL SYSTEM

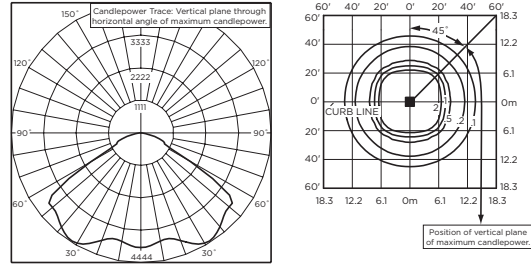
- **Input Voltage:** 120-277V or 347-480V, 50 / 60Hz, Class 1 drivers
- **Power Factor:** > 0.9 at full load
- **Total Harmonic Distortion:** < 20% at full load
- Integral 10kV surge suppression protection standard
- To address inrush current, slow blow fuse or type C / D breaker should be used

REGULATORY & VOLUNTARY QUALIFICATIONS

- cULus Listed
- Suitable for wet locations
- Enclosure rated IP66 per IEC 60529
- Consult factory for CE Certified products
- 10kV surge suppression protection tested in accordance with IEEE / ANSI C62.41.2
- Luminaire and finish endurance tested to withstand 5,000 hours of elevated ambient salt fog conditions as defined in ASTM Standard B 117
- Pending product qualification on the DesignLights Consortium ("DLC") Qualified Products List ("QPL")
- RoHS Compliant
- Meets Buy American requirements within ARRA

Photometry

All published luminaire photometric testing performed to IESNA LM-79-08 standards by a NVLAP certified laboratory.



ITL Test Report #: 77415
CAN-304-SL**-06-E-UL-700-40K
Initial Delivered Lumens: 12,707

PKG-304-SL**-06-E-UL-700-40K
Mounting Height: 15' (4.6m)
Initial Delivered Lumens: 12,760
Initial FC at grade

IES Files

To obtain an IES file specific to your project consult:
<http://www.cree.com/lighting/tools-and-support/exterior-ies-configuration-tool>

Lumen Output, Electrical, and Lumen Maintenance Data

Sparkle Petroleum Distribution												
LED Count (x10)	5700K		4000K		System Watts 120-480V	TOTAL CURRENT						50K Hours Projected Lumen Maintenance Factor*** @ 15°C (59°F)
	Initial Delivered Lumens*	BUG Ratings** Per TM-15-11	Initial Delivered Lumens*	BUG Ratings** Per TM-15-11		120V	208V	240V	277V	347V	480V	
350mA @ 25°C (77°F)												
04	5,243	B2 U0 G1	5,048	B2 U0 G1	46	0.39	0.24	0.22	0.21	0.15	0.12	94%
06	7,803	B3 U0 G1	7,514	B3 U0 G1	69	0.57	0.34	0.30	0.27	0.21	0.16	
525mA @ 25°C (77°F)												
04	7,340	B2 U0 G1	7,068	B2 U0 G1	71	0.59	0.35	0.31	0.28	0.21	0.16	93%
06	10,924	B3 U0 G1	10,519	B3 U0 G1	101	0.84	0.49	0.43	0.38	0.30	0.22	
700mA @ 25°C (77°F)												
04	8,912	B3 U0 G1	8,582	B3 U0 G1	94	0.79	0.46	0.40	0.36	0.28	0.21	91%
06	13,264	B3 U0 G1	12,773	B3 U0 G1	135	1.14	0.65	0.57	0.50	0.40	0.29	

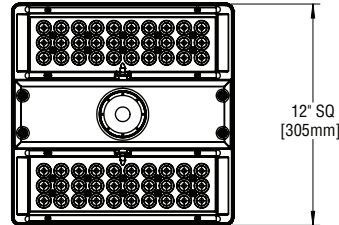
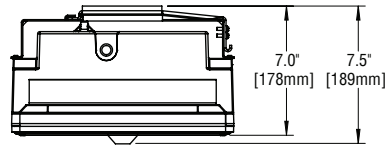
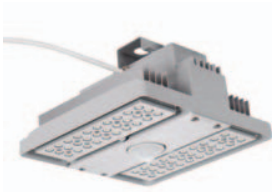
* Actual production yield may vary between -4 and +10% of initial delivered lumens.
** For more information on the IES BUG (Backlight-Uplight-Glare) Rating visit www.iesna.org/PDF/Erratas/TM-15-11BugRatingsAddendum.pdf.
*** For recommended lumen maintenance factor data see TD-13. Calculated L70 based on 6,000 hours LM-80-08 testing: > 150,000 hours.



PKG-304-25-DM 304 Series LED Parking Structure – 25° Flood Optic

Rev. Date: 2/2/12

BetaLED Catalog #: PKG - 304 - 25 - DM - - D - - - - -



Notes:

Product	Family	Optic	Mounting	# of LEDs (x 10)	LED Series	Voltage	Color Options	Drive Current	Factory-Installed Options
PKG	304	25 ¹	DM ²	<input type="checkbox"/> 04 <input type="checkbox"/> 06	D	<input type="checkbox"/> UL Universal 120–277V <input type="checkbox"/> UH Universal 347–480V	<input type="checkbox"/> SV Silver <input type="checkbox"/> BZ Bronze <input type="checkbox"/> BK Black <input type="checkbox"/> WH White <input type="checkbox"/> PB Platinum Bronze	<input type="checkbox"/> 700 700mA (Standard) <input type="checkbox"/> 525 525mA <input type="checkbox"/> 350 350mA	Please type additional options in manually on the lines provided above. <input type="checkbox"/> 40K 4000K Color Temperature ³ <input type="checkbox"/> DIM 0–10V Dimming ^{4,5,6} <input type="checkbox"/> F Fuse ^{7,8} <input type="checkbox"/> ML Multi-Level (75/525mA) ⁹ <input type="checkbox"/> J Alternate Junction Box mounting

Footnotes

- Distribution similar to spot flood (25°)
- Direct mount
- Color temperature per full luminaire; 5700K standard; minimum 70 CRI
- Control by others
- Can't exceed specified drive current; consult factory if exceeding drive current is necessary
- Refer to dimming spec sheet for availability and additional information
- When code dictates fusing use time delay fuse
- Not available with all multi-level options. Refer to 304 series multi-level spec sheet for availability and additional information
- Refer to 304 series multi-level spec sheet for availability and additional information

LED PERFORMANCE SPECS

# of LEDs	Initial Delivered Lumens – 25° Optic @ 6000K	Initial Delivered Lumens – 25° Optic @ 4300K	System Watts 120–480V	Total Current @ 120V	Total Current @ 230V	Total Current @ 277V	Total Current @ 347V	Total Current @ 480V	L ₇₀ Hours** @ 25° C (77° F)	Lumen Maintenance @ 50K Hours @ 15° C (59° F)
350mA Fixture Operating at 25° C (77° F)										
40	4,671 (04)	4,305 (04)	47	0.39	0.23	0.19	0.15	0.11	>150,000	94%
60	6,958 (06)	6,413 (06)	68	0.59	0.33	0.27	0.20	0.15	>150,000	
525mA Fixture Operating at 25° C (77° F)										
40	6,540 (04)	6,028 (04)	68	0.58	0.33	0.27	0.21	0.16	148,000	93%
60	9,741 (06)	8,978 (06)	105	0.91	0.48	0.40	0.33	0.22	144,000	
700mA (Standard) Fixture Operating at 25° C (77° F)										
40	7,942 (04)	7,319 (04)	94	0.81	0.44	0.36	0.28	0.20	128,000	91%
60	11,828 (06)	10,902 (06)	141	1.26	0.66	0.54	0.39	0.28	122,000	

* For recommended lumen depreciation data see TD-13



General Description

Slim, low profile design. Fixture is constructed from rugged die-cast and extruded aluminum components. LED driver is mounted in a sealed weather-tight center chamber that allows for access from below the fixture. High performance aluminum heatsinks specifically designed for LED parking structure application. Mounting bracket designed to mount directly over existing single gang and octagonal junction boxes for direct mount. Five year limited warranty on fixture.

Electrical

Modular design accommodates varied lighting output from high power, white, 5700K (+/- 500K per full fixture), minimum 70 CRI, long life LED sources. Optional 4000K (+/- 300K per full fixture) also available. 120–277V 50/60 Hz, Class 1 LED drivers are standard. 347–480V 50/60Hz driver is optional. LED drivers have power factor >90% and THD <20% of full load. Units provided with integral 10kV surge suppression protection standard. Surge protection tested in accordance with IEEE/ANSI standard 62.41.2.

Testing & Compliance

UL listed in the US and Canada for wet locations. Enclosure classified IP66 per IEC 60529 when ordered without the ML options. Consult factory for CE Certified products. IP66 rated. Dark Sky Friendly. IDA Approved. RoHS Compliant.



Finish

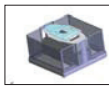
Exclusive Colorfast DeltaGuard® finish features an E-Coat epoxy primer with an ultra-durable silver powder topcoat, providing excellent resistance to corrosion, ultraviolet degradation and abrasion. Bronze, black, white and platinum bronze powder topcoats are also available. The finish is covered by our 10 year limited warranty.

Fixture and finish are endurance tested to withstand 5,000 hours of elevated ambient salt fog conditions as defined in ASTM Standard B 117.

Patents

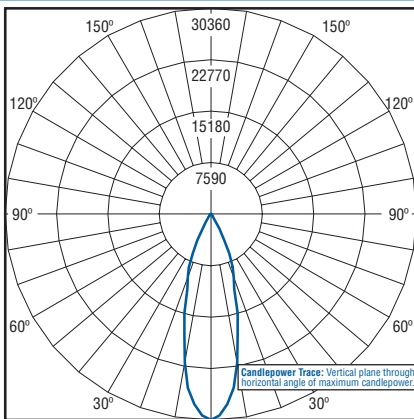
U.S. and international patents granted and pending. BetaLED is a division of Ruud Lighting, Inc. For a listing of Ruud Lighting, Inc. patents, visit www.uspto.gov.

Field-Installed Accessories



- Bird Valence
- XA-XCPVLNC

Photometrics



Independent Testing Laboratories certified test. Report No. ITL65016. Candlepower trace of 4000K, 60 LED 25° flood optic 304 series parking structure luminaire with 11,080 initial delivered lumens operating at 700mA. All published luminaire photometric testing performed to IESNA LM-79-08 standards.

Zonal Lumens and Percentages

Zone	Lumens	% Lamp	% Fixture
0-30	9,829.39	88.70	88.70
0-40	10,612.42	95.80	95.70
0-60	10,985.07	99.10	99.10
0-90	11,080.44	100.00	100.00
90-120	0.00	0.00	0.00
90-130	0.00	0.00	0.00
90-150	0.00	0.00	0.00
90-180	0.00	0.00	0.00
0-180	11,080.44	100.10	100.00

Coefficients of Utilization

1. Effective Floor Cavity Reflectance = 0.20

CC	80				70				50				30				10				0
	WALL	70	50	30	10	70	50	30	10	50	30	10	50	30	10	50	30	10			
RCR	70	50	30	10	70	50	30	10	50	30	10	50	30	10	50	30	10	50	30	10	
0	119	119	119	119	116	116	116	116	111	111	111	106	106	106	102	102	102	100	100	100	
1	114	112	110	108	112	110	108	106	106	104	103	102	101	100	99	98	97	95	95	95	
2	110	106	102	99	108	104	101	98	101	98	96	98	96	94	94	93	92	91	91	91	
3	105	100	96	92	104	99	95	92	96	93	90	94	91	89	92	89	88	86	86	86	
4	101	95	90	87	100	94	90	86	91	88	85	90	87	84	88	86	83	82	82	82	
5	97	91	86	82	96	90	85	82	88	84	81	86	83	80	85	82	80	78	78	78	
6	94	86	82	78	93	86	81	78	84	80	77	83	79	77	82	79	76	75	75	75	
7	90	83	78	74	89	82	78	74	81	77	74	80	76	73	79	76	73	72	72	72	
8	87	79	75	71	86	79	74	71	78	74	71	77	73	70	76	73	70	69	69	69	
9	84	76	71	68	83	76	71	65	75	71	68	74	70	68	73	70	67	66	66	66	
10	81	73	69	66	81	73	69	65	72	68	65	72	68	65	71	68	65	64	64	64	

Luminance Data

Angle	Average (0°)	Average (45°)	Average (90°)
45°	7,365	7,747	6,770
55°	5,025	3,938	4,290
65°	2,592	2,592	2,273
75°	1,563	1,563	1,563
85°	0	0	0

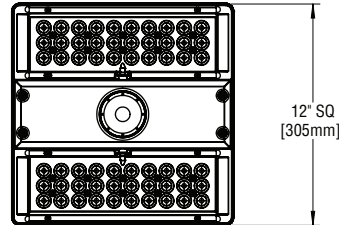
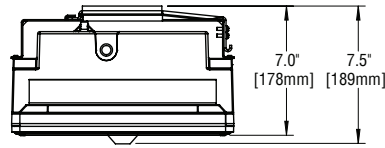
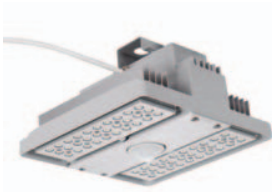


© 2012 Ruud Lighting Inc. – A Cree Company. All rights reserved. The information in this document is subject to change without notice. 9201 Washington Ave • Racine, WI 53406-3772 • 800-236-6800 • www.BetaLED.com



Made in the U.S.A. of U.S. and imported parts. Meets Buy American requirements within the ARRA.

BetaLED Catalog #: PKG - 304 - 40 - DM - - D - - - - -



Notes:

Product	Family	Optic	Mounting	# of LEDs (x 10)	LED Series	Voltage	Color Options	Drive Current	Factory-Installed Options
PKG	304	40°	DM ²	<input type="checkbox"/> 04 <input type="checkbox"/> 06	D	<input type="checkbox"/> UL Universal 120–277V <input type="checkbox"/> UH Universal 347–480V	<input type="checkbox"/> SV Silver <input type="checkbox"/> BZ Bronze <input type="checkbox"/> BK Black <input type="checkbox"/> WH White <input type="checkbox"/> PB Platinum Bronze	<input type="checkbox"/> 700 700mA (Standard) <input type="checkbox"/> 525 525mA <input type="checkbox"/> 350 350mA	Please type additional options in manually on the lines provided above. <input type="checkbox"/> 40K 4000K Color Temperature ³ <input type="checkbox"/> DIM 0–10V Dimming ^{4,5,6} <input type="checkbox"/> F Fuse ^{7,8} <input type="checkbox"/> ML Multi-Level (75/525mA) ⁹ <input type="checkbox"/> J Alternate Junction Box mounting

Footnotes

- Distribution similar to flood (40°)
- Direct mount
- Color temperature per full luminaire; 5700K standard; minimum 70 CRI
- Control by others
- Can't exceed specified drive current; consult factory if exceeding drive current is necessary
- Refer to dimming spec sheet for availability and additional information
- When code dictates fusing use time delay fuse
- Not available with all multi-level options. Refer to 304 series multi-level spec sheet for availability and additional information
- Refer to 304 series multi-level spec sheet for availability and additional information

LED PERFORMANCE SPECS

# of LEDs	Initial Delivered Lumens – 40° Optic @ 6000K	Initial Delivered Lumens – 40° Optic @ 4300K	System Watts 120–480V	Total Current @ 120V	Total Current @ 120V	Total Current @ 240V	Total Current @ 277V	Total Current @ 347V	Total Current @ 480V	L ₇₀ Hours** @ 25° C (77° F)	50k Hours Lumen Maintenance Factor @ 15° C (59° F)
350mA Fixture Operating at 25° C (77° F)											
40	4,570 (04)	4,212 (04)	47	0.39	0.24	0.21	0.19	0.15	0.11	>150,000	94%
60	6,807 (06)	6,273 (06)	68	0.59	0.35	0.30	0.27	0.20	0.15	>150,000	
525mA Fixture Operating at 25° C (77° F)											
40	6,398 (04)	5,897 (04)	68	0.58	0.34	0.30	0.27	0.21	0.16	148,000	93%
60	9,529 (06)	8,783 (06)	105	0.91	0.53	0.46	0.40	0.33	0.22	144,000	
700mA (Standard) Fixture Operating at 25° C (77° F)											
40	7,769 (04)	7,160 (04)	94	0.81	0.47	0.41	0.36	0.28	0.20	128,000	91%
60	11,571 (06)	10,665 (06)	141	1.26	0.72	0.59	0.54	0.39	0.28	122,000	

* For recommended lumen depreciation data see TD-13



General Description

Slim, low profile design. Fixture is constructed from rugged die-cast and extruded aluminum components. LED driver is mounted in a sealed weather-tight center chamber that allows for access from below the fixture. High performance aluminum heatsinks specifically designed for LED parking structure application. Mounting bracket designed to mount directly over existing single gang and octagonal junction boxes for direct mount. Five year limited warranty on fixture.

Electrical

Modular design accommodates varied lighting output from high power, white, 5700K (+/- 500K per full fixture), minimum 70 CRI, long life LED sources. Optional 4000K (+/- 300K per full fixture) also available. 120–277V 50/60 Hz, Class 1 LED drivers are standard. 347–480V 50/60Hz driver is optional. LED drivers have power factor >90% and THD <20% of full load. Units provided with integral 10kV surge suppression protection standard. Surge protection tested in accordance with IEEE/ANSI standard 62.41.2.

Testing & Compliance

UL listed in the US and Canada for wet locations. Enclosure classified IP66 per IEC 60529 when ordered without the ML options. Consult factory for CE Certified products. IP66 rated. Dark Sky Friendly. IDA Approved. RoHS Compliant.



Finish

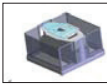
Exclusive Colorfast DeltaGuard® finish features an E-Coat epoxy primer with an ultra-durable silver powder topcoat, providing excellent resistance to corrosion, ultraviolet degradation and abrasion. Bronze, black, white and platinum bronze powder topcoats are also available. The finish is covered by our 10 year limited warranty.

Fixture and finish are endurance tested to withstand 5,000 hours of elevated ambient salt fog conditions as defined in ASTM Standard B 117.

Patents

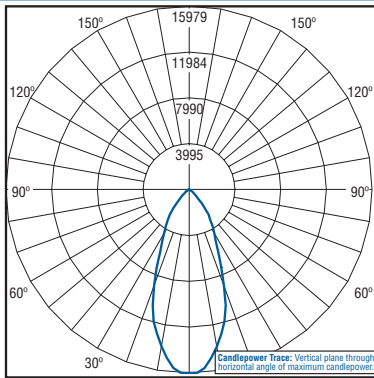
U.S. and international patents granted and pending. BetaLED is a division of Ruud Lighting, Inc. For a listing of Ruud Lighting, Inc. patents, visit www.uspto.gov.

Field-Installed Accessories



Bird Valence
 XA-XCPVLNC

Photometrics



Independent Testing Laboratories certified test. Report No. ITL70141. Candlepower trace of 4000K, 60 LED 40° flood optic 304 series parking structure luminaire with 10,902 initial delivered lumens operating at 700mA. All published luminaire photometric testing performed to IESNA LM-79-08 standards.

Zonal Lumens and Percentages

Zone	Lumens	% Lamp	% Fixture
0-30	7,502.98	55.50	55.50
0-40	9,512.85	83.40	83.40
0-60	10,763.49	98.70	98.70
0-90	10,901.83	100.00	100.00
90-120	0.00	0.00	0.00
90-130	0.00	0.00	0.00
90-150	0.00	0.00	0.00
90-180	0.00	0.00	0.00
0-180	10,901.83	100.10	100.00

Coefficients of Utilization

1.
 Effective Floor Cavity Reflectance = 0.20

CC	80				70				50				30				10				0
	WALL	70	50	30	10	70	50	30	10	50	30	10	50	30	10	50	30	10			
RCR																					
0	119	119	119	119	116	116	116	116	111	111	111	106	106	106	102	102	102	100	100	100	
1	113	111	108	106	111	108	106	104	104	103	101	101	99	98	97	96	95	93	93	93	
2	108	103	99	95	105	101	97	94	98	95	91	95	92	90	92	90	88	87	87	87	
3	102	96	91	87	100	94	90	86	82	88	84	89	86	83	87	84	82	80	80	80	
4	97	89	84	79	95	88	83	79	86	82	78	84	80	77	82	79	76	75	75	75	
5	92	84	78	73	90	83	77	73	81	76	72	79	75	72	78	74	71	70	70	70	
6	87	79	73	68	86	78	72	68	76	71	68	75	70	67	74	70	67	64	64	64	
7	83	74	68	64	82	73	68	64	72	67	63	71	66	63	70	66	63	61	61	61	
8	79	70	64	60	78	69	64	60	68	63	59	67	62	59	66	62	59	57	57	57	
9	76	66	60	56	75	66	60	56	65	60	56	64	59	56	63	59	56	54	54	54	
10	72	63	57	53	71	62	57	53	61	56	53	61	56	53	60	56	53	51	51	51	

Luminance Data

Angle	Average (0°)	Average (45°)	Average (90°)
45°	22,454	31,560	23,050
55°	9,315	10,021	10,021
65°	4,228	4,228	3,869
75°	1,368	1,889	1,889
85°	967	967	967



© 2012 Ruud Lighting Inc. – A Cree Company. All rights reserved. The information in this document is subject to change without notice. 9201 Washington Ave • Racine, WI 53406-3772 • 800-236-6800 • www.BetaLED.com

Made in the U.S.A. of U.S. and imported parts.
 Meets Buy American requirements within the [ARRA](http://www.arra.gov).